

Arlington Housing Authority

Inspections and Contracts



Arlington Housing Authority Basics

\$49M yearly budget

Assist low-income families
with rental assistance

45% of our families are
elderly and/or disabled

93% have income

Consistently have families
searching for a unit

Housing Inspections



What does Housing Inspect?

Electrical

- Outlets
- Panels
- GFI's
- Cover plates



What does Housing Inspect?

Plumbing

- P-traps
- Leaks
- Faucets
- Water heaters



What does Housing Inspect?

Provided Appliances

- Refrigerators
- Stoves
- Microwaves
- Washer and dryers
- Dishwashers



What does Housing Inspect?

Windows

- Open and stays open
- Locks
- Window panes



What does Housing Inspect?

Exterior Doors

Locks

Weather tight

Interior Doors

Locks

Where required?





Protect Your Family From Lead in Your Home

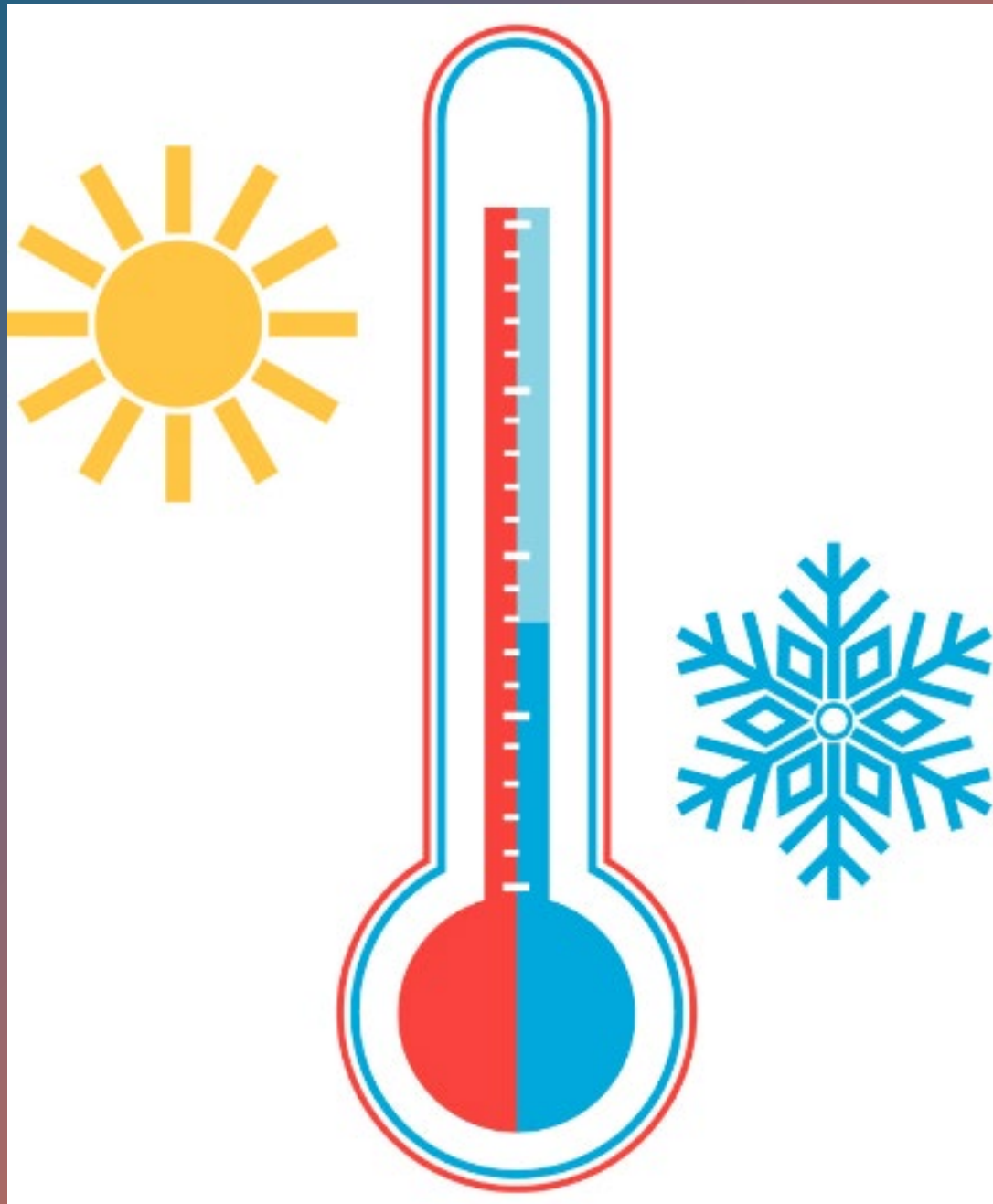


September 2013

What does Housing Inspect?

Paint

- Built prior to 1978
- Lead Based Paint



What does Housing Inspect?

HVAC

- Must cool to at least 15 degrees cooler than outside temperature
- Heat must be provided and not have any hazards or gas leaks

What does Housing Inspect?

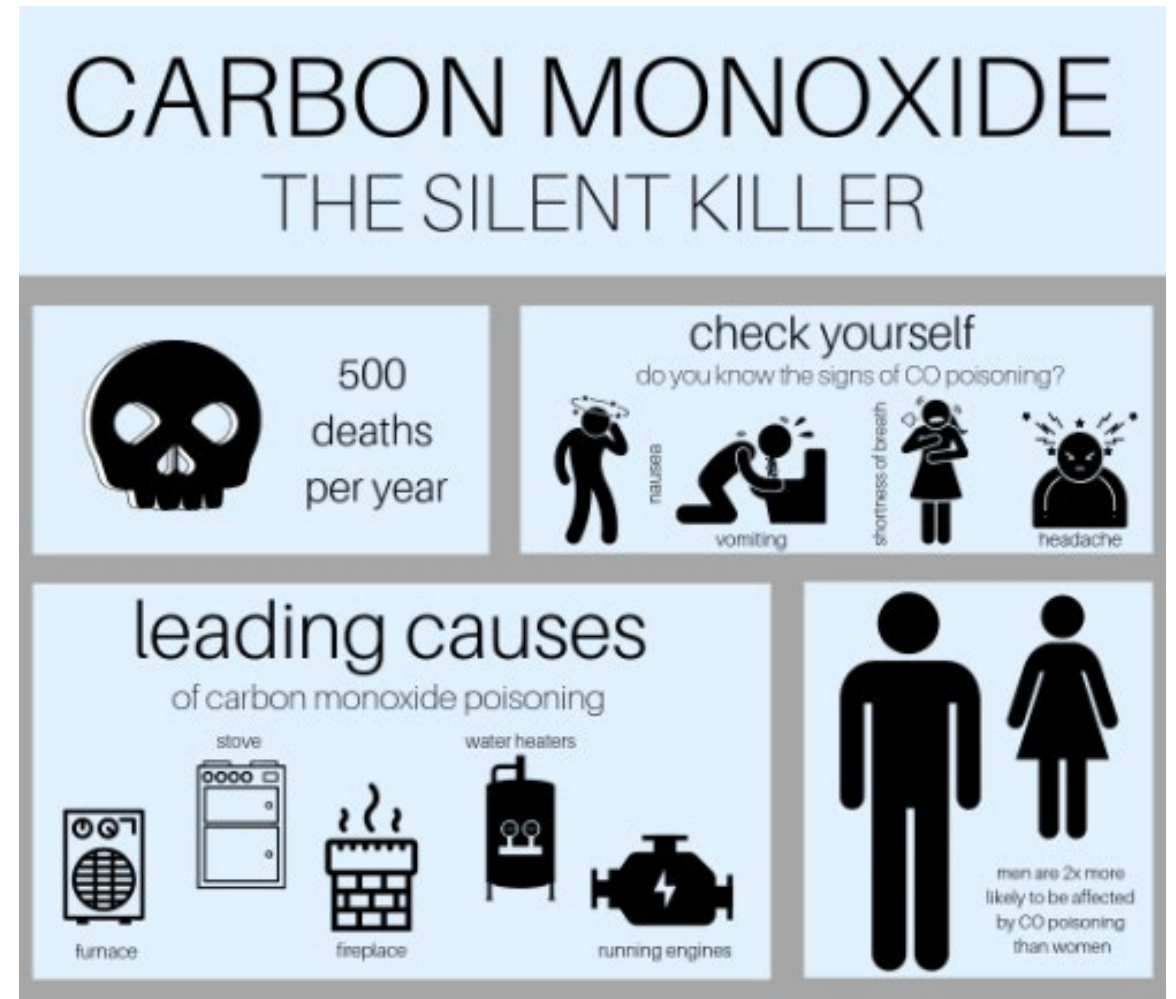
Smoke Detectors

- On each level of unit
- In the common hall of bedrooms
- In each bedroom
 - No closer than 36" from AC vent, windows or exterior drafts
 - If mounted on ceiling, must be more than 4" from the wall
 - If mounted on wall, no closer than 4" or more than 12" from the ceiling
- Smoke alarm can not be painted or have stickers on them

What does Housing Inspect?

Carbon Monoxide Detectors

- Required if a unit has a
 - Fireplace
 - Attached garage
 - Gas appliances
- Required
 - On each level of the unit
 - In common hall of bedrooms





ARLINGTON HOUSING AUTHORITY

When are contracts issued?

- New move in
- Change in utilities

How Contracts Work

