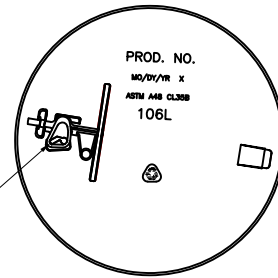
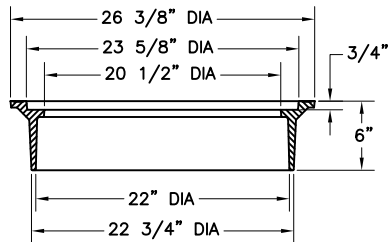


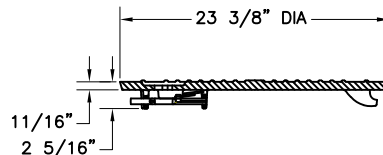
ASSEMBLY



BOTTOM VIEW  
OF COVER



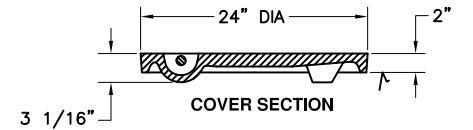
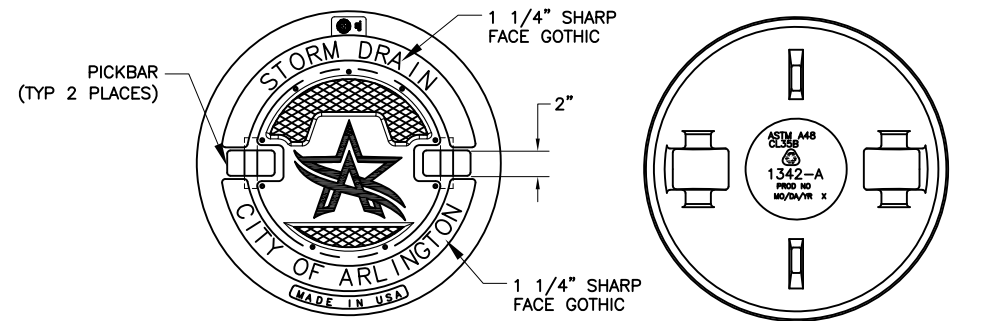
FRAME SECTION



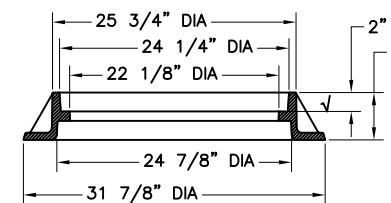
COVER SECTION

MANUFACTURER	REFERENCE NUMBER	APPROX. WEIGHT
EAST JORDAN	106-6L	175 lb
BASS & HAYS	BH 226L	175 lb
*OR APPROVED EQUAL		

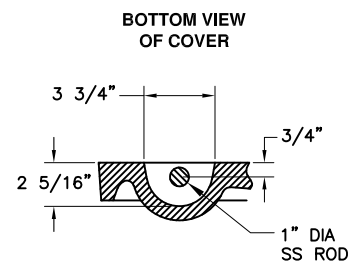
NON-TRAFFIC RATED LOCKING  
NTS



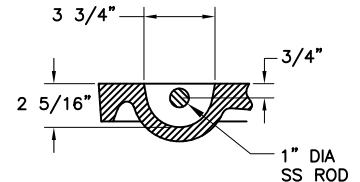
COVER SECTION



RING SECTION



BOTTOM VIEW  
OF COVER



PICKBAR DETAILS

✓ MACHINED SURFACE

MANUFACTURER	REFERENCE NUMBER	APPROX. WEIGHT
EAST JORDAN	1342Z1/A	291 lb
BASS & HAYS	V-1342	288 lb
*OR APPROVED EQUAL		

TRAFFIC RATED  
NTS

NOTES:

1. NON-TRAFFIC RATED ASSEMBLIES SHALL NOT EXCEED A LOAD OF 16,000 LBS.
2. TRAFFIC RATED ASSEMBLIES SHALL BE LOAD RATED H20.

STORM DRAIN MANHOLE COVER & FRAME  
NTS

REV: 5/19/21



CITY OF ARLINGTON, TEXAS

**STORM DRAIN MANHOLE  
COVER & FRAME**

DATE:	SCALE: NTS	SHEET: OF
DESIGNED BY:	DRAWN BY:	CHECKED BY: