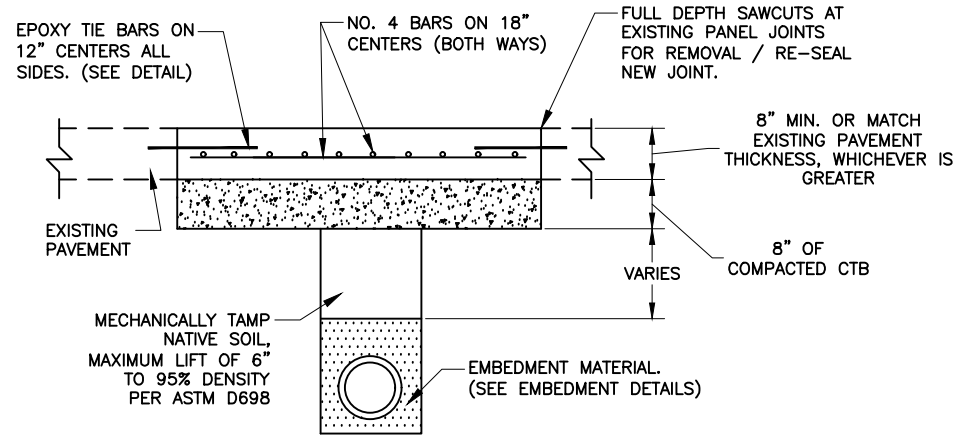
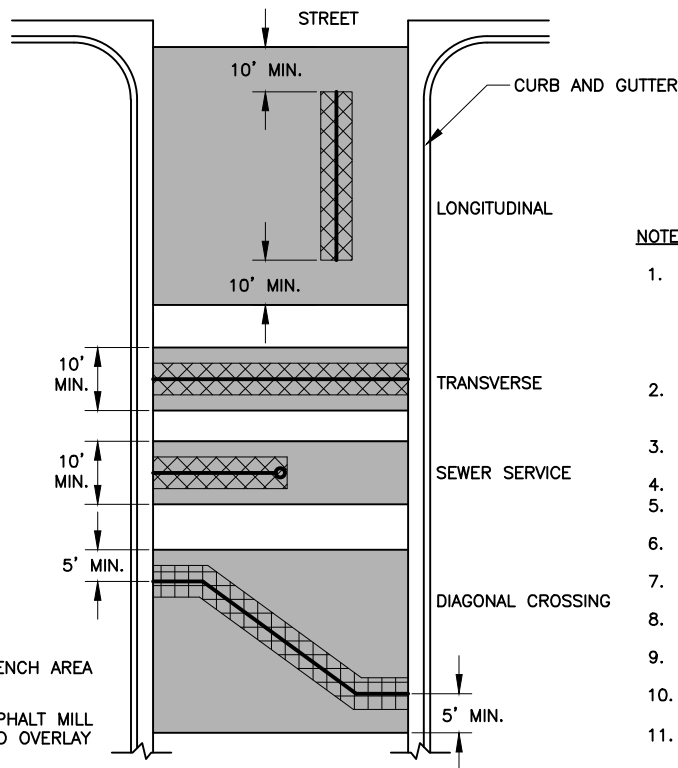


ASPHALT STREET
NTS



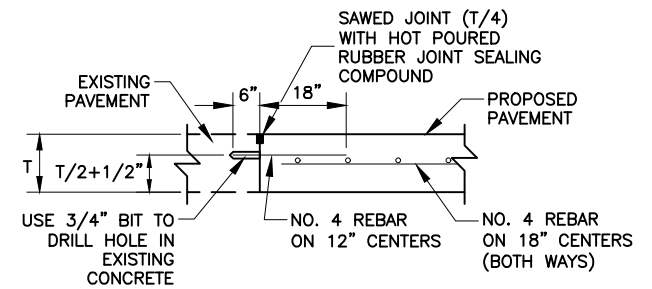
CONCRETE STREET
NTS



TYPICAL ASPHALT
PAVING REPAIRS
NTS

NOTES:

1. A WET SAW SHALL BE USED TO CUT ASPHALT OR CONCRETE FULL DEPTH PRIOR TO OPENING THE DITCH IN ORDER TO INSURE A NEAT STRAIGHT EDGE. BROKEN OR SPALLED EDGES WILL BE RE-SAWED FULL DEPTH BETWEEN JOINTS OR FULL LENGTH OF CUT.
2. CTB - CEMENT TREATED BASE (CONTAINS AGGREGATE) MATERIAL SHALL BE MECHANICALLY TAMPED TO 95% DENSITY PER ASTM D698.
3. ALL CONCRETE PAVEMENT SHALL BE CLASS C, 6 SACK, 3600 PSI.
4. ALL CONCRETE PAVEMENT MUST BE VIBRATED.
5. A 10' STRAIGHT EDGE WITH HANDLE SHALL BE USED ON ALL CONCRETE PANELS.
6. ALL CONCRETE PAVEMENT MUST BE BAKER BROOM FINISHED.
7. WHITE PIGMENT CURING COMPOUND MUST BE USED FOR ALL CONCRETE PAVEMENT.
8. ALL MATERIALS AND CONSTRUCTION TO MEET CITY OF ARLINGTON STANDARD SPECIFICATIONS.
9. ALL CONCRETE STREET REPAIRS SHALL BE THE FULL PANEL REPLACEMENT.
10. ALL ASPHALT STREET REPAIRS SHALL BE FULL-WIDTH (CURB TO CURB).
11. TRANSVERSE TRENCHES THAT CROSS THE ENTIRE ROADWAY SHALL BE PERFORMED BY METHOD OTHER THAN OPEN CUT IF POSSIBLE.
12. MILL & OVERLAY WILL ONLY BE ALLOWED IF THE EXISTING HMAC IS A MINIMUM OF 6" AND THE OVERALL CONDITION INDEX (OCI) IS GREATER THAN 50. IF THE OCI IS LESS THAN 50, RECLAMATION MUST BE PERFORMED. SEE RECLAMATION DETAILS.



EPOXY TIE-BAR (DETAIL)
NTS

PERMANENT BACKFILL & REPAIR
NTS
REV: 4/9/20

 CITY OF ARLINGTON, TEXAS

PERMANENT BACKFILL & REPAIR

DATE:	SCALE: NTS	SHEET: OF
DESIGNED BY:	DRAWN BY:	CHECKED BY: