

32" DUCTILE IRON MANHOLE FRAME AND COVER. MATCH TOP OF COVER WITH PAVEMENT OR SET COVER UP TO 1/4" (MAX.) ABOVE FINISHED GRADE IN RESIDENTIAL AREAS. SEE MANHOLE FRAME AND COVER DETAILS.

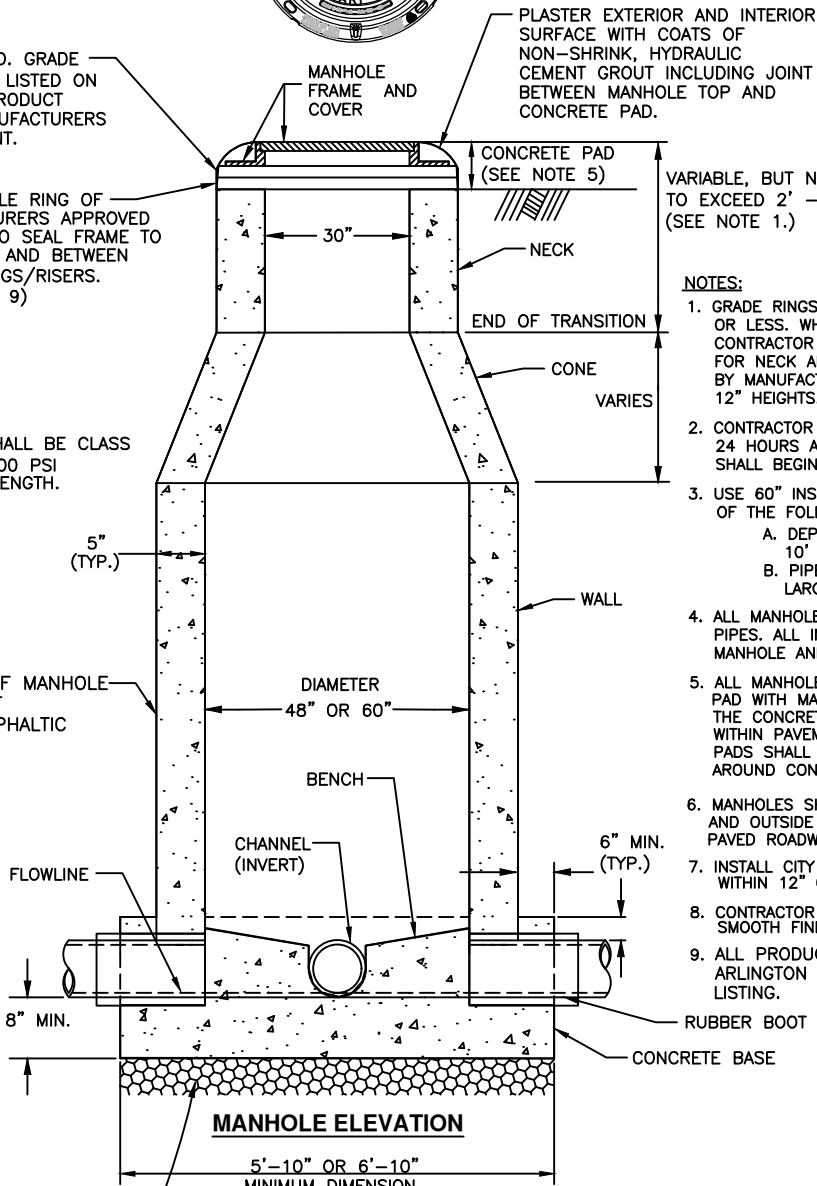
MANHOLES CONSTRUCTED WITHIN 100 YEAR FLOOD PLAIN SHALL HAVE WATERTIGHT RING AND LID.

40" O.D X 30" I.D. GRADE RINGS/RISERS AS LISTED ON THE APPROVED PRODUCT LISTING WITH MANUFACTURERS APPROVED SEALANT.

USE DOUBLE RING OF MANUFACTURERS APPROVED SEALANT TO SEAL FRAME TO CONCRETE AND BETWEEN GRADE RINGS/RISERS. (SEE NOTE 9)

ALL CONCRETE SHALL BE CLASS C, 5 1/2 SACK, 3600 PSI COMPRESSIVE STRENGTH.

COAT EXTERIOR OF MANHOLE WITH 2 COATS OF NON-FIBERED ASPHALTIC EMULSION.



VARIABLE, BUT NOT TO EXCEED 2' - 6". (SEE NOTE 1.)

NOTES:

1. GRADE RINGS/RISERS MAY BE USED TO ADJUST NECK 12" OR LESS. WHEN ADJUSTMENT IS GREATER THAN 12", CONTRACTOR SHALL USE SONO TUBE AND PLACE CONCRETE FOR NECK ADJUSTMENT. GRADE RINGS/RISERS CONSTRUCTED BY MANUFACTURER IN STANDARD 2", 3", 6", 8" AND 12" HEIGHTS.
2. CONTRACTOR SHALL NOT REMOVE ANY FORMS UNTIL 24 HOURS AFTER CONCRETE IS PLACED. NO BACKFILL SHALL BEGIN UNTIL 96 HOURS AFTER CONCRETE IS PLACED.
3. USE 60" INSIDE DIAMETER MANHOLES UNDER ANY OF THE FOLLOWING:
 - A. DEPTH FROM TOP OF COVER TO FLOWLINE IS 10' OR GREATER
 - B. PIPES INTO MANHOLE ARE 15" DIAMETER OR LARGER
4. ALL MANHOLE INVERTS SHALL BE FULL DEPTH OF SEWER PIPES. ALL INVERTS SHALL BE FORMED TO CENTER OF MANHOLE AND SHALL PROVIDE SMOOTH FLOW TRANSITIONS.
5. ALL MANHOLES SHALL BE INSTALLED WITH 5'X5' CONCRETE PAD WITH MANHOLE COVERS IN CENTER OF PAD. THE CONCRETE PAD SHALL MATCH PAVEMENT THICKNESS WITHIN PAVEMENT, OR BE 6" THICK OUTSIDE PAVED AREAS. PADS SHALL BE REINFORCED WITH FOUR NO. 4 REBARS. AROUND CONCRETE PADS.
6. MANHOLES SHALL BE INSTALLED IN CENTER OF LANES AND OUTSIDE NORMAL TIRE PATH OF LANE WHEN IN PAVED ROADWAYS.
7. INSTALL CITY FURNISHED FIBERGLASS MH MARKER WITHIN 12" OF PAD IN UNDEVELOPED AREA.
8. CONTRACTOR SHALL RUB ALL INTERIOR SURFACES TO A SMOOTH FINISH.
9. ALL PRODUCTS SHALL BE APPROVED BY THE CITY OF ARLINGTON WATER UTILITIES. SEE APPROVED PRODUCT LISTING.

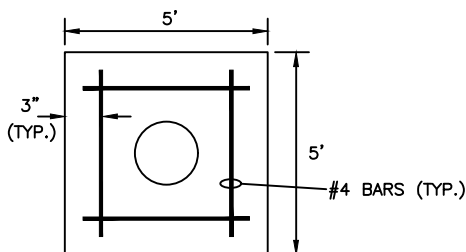
RUBBER BOOT AT ALL PIPE PENETRATIONS (TYP.)

CONCRETE BASE

ALL CHANNEL INVERTS SHALL EXTEND THROUGHOUT MANHOLE BOTTOM AND PROVIDE SMOOTH FLOW TRANSITIONS.

ALL BENCHES SHALL SLOPE @ 1/4"/FT.

WORK CHANNEL (INVERT) TO PROVIDE SMOOTH FLOW TRANSITIONS AND EASY REMOVAL OF CLOSED CIRCUIT TELEVISION.



MANHOLE PAD PLAN

CITY OF ARLINGTON, TEXAS
CAST IN PLACE
SANITARY SEWER MANHOLE
 DATE: 11/19/2018