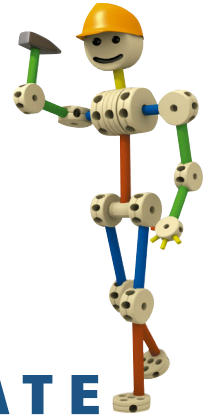


# EXCITEMENT IS BUILDING



## ENTERTAINMENT DISTRICT UPDATE

Vol. 1, Issue 1

October 11, 2006

### Roadway Improvements Begin This Month Paving the Way to Progress

Construction activities in and around the Entertainment District are gaining momentum. This month, contracts for road, water, sewer and drainage improvements in the Entertainment District are being awarded. Infrastructure improvements are scheduled to enhance safety and mobility in a special district poised for growth and expansion.

#### Roadway Improvements

Baird Farm Road is on schedule to becoming a seven lane undivided boulevard, improving travel through the Entertainment District and connecting the entertainment attractions north of Interstate-

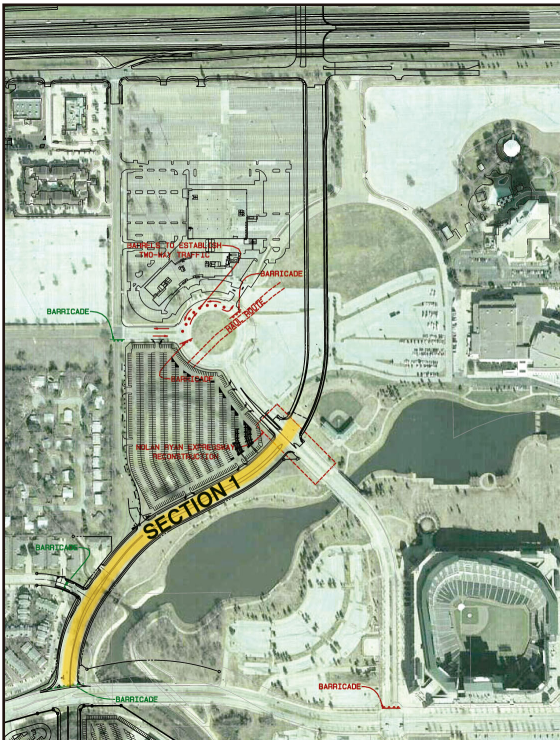
30 with the venues south of the interstate. Construction of Baird Farm Road Section One (Randol Mill to Nolan Ryan Expressway) begins this month.

Engineering drawings of the future Baird Farm Road Bridge show entrance and exit ramps with pedestrian friendly walkways.

The extension of Baird Farm Road also includes the reconstruction of Copeland Road and the addition of approximately 1,100 parking lot spaces on a 9.8 acre site bound by Pennant on the west and Nolan Ryan Expressway on the east.

This month, contractors will begin to transport approximately 25,000 cubic yards of dirt in this area to a site in Euless. Approximately 155,000 cubic yards will remain on site for the extension of Baird Farm Road.

Dirt transport operations begin Monday, October 16 and are scheduled to continue for approximately 12 weeks, from 7 a.m. to 5:30 p.m. Monday through Saturday.



#### Quarterly Stadium Updates

The Cowboys Stadium Scoreboard chronicles the progress of the Cowboys Complex from bond sale to kick off. The 2006 First Quarter Report is coming. Watch for it next month.



#### Safety First!

1. Watch for large moving trucks during day hours.
2. Pass safely. Maintain a safe distance. Do not follow too close.
3. Report safety issues via the [Citizen Action Request Form](#) or on the 24-Hour Citizen Action Request Line at 817-459-6777.

#### Looking Ahead

##### October 2006 to January 2007

- Nolan Ryan Expressway from Randol Mill Road to the traffic circle closes. Construction of the new Baird Farm Road at Nolan Ryan Expressway begins.
- Contractors will remove and transport dirt for the future Baird Farm Road and begin the reconstruction of Copeland Road.
- Construction of the 1,100-space parking lot begins.

##### January 2007 to March 2007

- Nolan Ryan Expressway from Randol Mill Road to traffic circle re-opens.
- Pennant Drive from Randol Mill Road to East Road to Six Flags closes. Pennant Drive is reconstructed.

Want more information? Go to [www.ci.arlington.tx.us](http://www.ci.arlington.tx.us)

