

Arlington Fire Department Organizational Chart

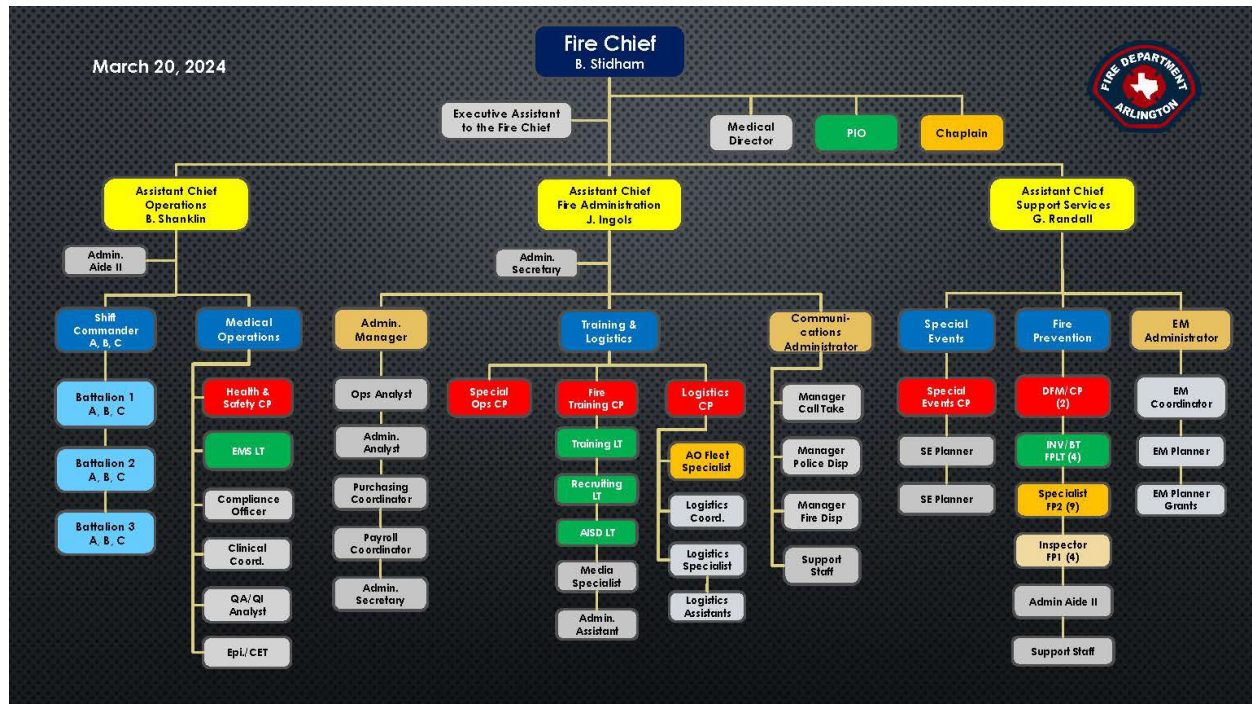


Figure 1: Arlington Fire Department Organizational Chart

Organizational Structure (Text Version)

- **Fire Chief Brett Stidham**
 - **Executive Assistant**, reports to Fire Chief
 - **Medical Director**, reports to Fire Chief
 - **Public Information Officer**, reports to Fire Chief
 - **Chaplain**, reports to Fire Chief
 - **Assistant Chief of Operations**, reports to Fire Chief
 - Administration Aid 2 reports to Assistant Chief of Operations
 - Shift Commander, reports to Assistant Chief of Operations
 - Battalion 1 Division Chief, reports to Shift Commander
 - Battalion 2 Division Chief, reports to Shift Commander
 - Battalion 3 Division Chief, reports to Shift Commander
 - Division Chief of Medical Operation, reports to Assistant Chief of Operations

- Health and Safety Captain, reports to Division Chief of Medical Operation
- Emergency Medical Services Lieutenant reports to Division Chief of Medical Operation
- Compliance Officer, reports to Division Chief of Medical Operation
- Clinical Coordinator, reports to Division Chief of Medical Operation
- **Assistant Chief of Fire Administration, reports to Fire Chief**
 - Executive Assistant, reports to Assistant Chief of Fire Administration
 - Financial Administrator, reports to Assistant Chief of Fire Administration
 - Fiscal Coordinator, reports to Financial Administrator
 - Epidemiologist, reports to Financial Administrator
 - Operations Analyst, reports to Financial Administrator
 - Administration Analyst, reports to Financial Administrator
 - Purchasing Coordinator, reports to Financial Administrator
 - Payroll coordinator, reports to Chief of Financial Administrator
 - Administration Secretary, reports to Financial Administrator
 - Division Chief of Training and Logistics, reports to Assistant Chief of Fire Administration
 - Special Operations Captain, reports to Chief of Training and Logistics
 - Fire Training Captain, reports to Chief of Training and Logistics
 - Training Lieutenant, reports to Fire Training Captain
 - Recruiting Lieutenant, reports to Fire Training Captain
 - AISD Lieutenant, reports to Fire Training Captain
 - Media Specialist, reports to Fire Training Captain
 - Office Assistant, reports to Fire Training Captain
 - Logistics Captain, reports to Chief of Training and Logistics
 - Apparatus Operator Fleet Specialist, reports to Logistics Captain
 - Logistics Coordinator, reports to Logistics Captain
 - Logistics Specialist, reports to Logistics Captain
 - Logistics Assistant, reports to Logistics Captain
 - Communications Administrator, reports to Assistant Chief of Fire Administration

- Call Take Manager, reports to Communications Administrator
 - Police Dispatch Manager, reports to Communications Administrator
 - Fire Dispatch Manager, reports to Communications Administrator
 - Support Staff, reports to Communications Administrator
- **Assistant Chief of Support Services, reports to Fire Chief**
 - Division Chief of Special Events, report to Assistant Chief of Support Services
 - Special Events Captain, reports to Division Chief of Special Events
 - Special Events Planner, reports to Division Chief of Special Events
 - Division Chief of Fire Prevention, report to Assistant Chief of Support Services
 - Fire Prevention Captains, reports to Division Chief of Fire Prevention
 - Fire Prevention Lieutenants, reports to Division Chief of Fire Prevention
 - Fire Prevention Specialists, reports to Division Chief of Fire Prevention
 - Fire Prevention Inspectors, reports to Division Chief of Fire Prevention
 - Administrative Aid 2, reports to Division Chief of Fire Prevention
 - Support Staff, reports to Division Chief of Fire Prevention
 - Emergency Management Administrator, report to Assistant Chief of Support Services
 - Emergency Management Coordinator, reports to Emergency Management Administrator
 - Emergency Management Planner, reports to Emergency Management Administrator
 - Emergency Management Grants Planner, reports to Emergency Management Administrator