

PUBLIC HEARING

ZONING CASE: PD21-36

PUBLIC HEARING DATES: 04/06/22 (Planning and Zoning Commission)
05/10/22 (City Council)

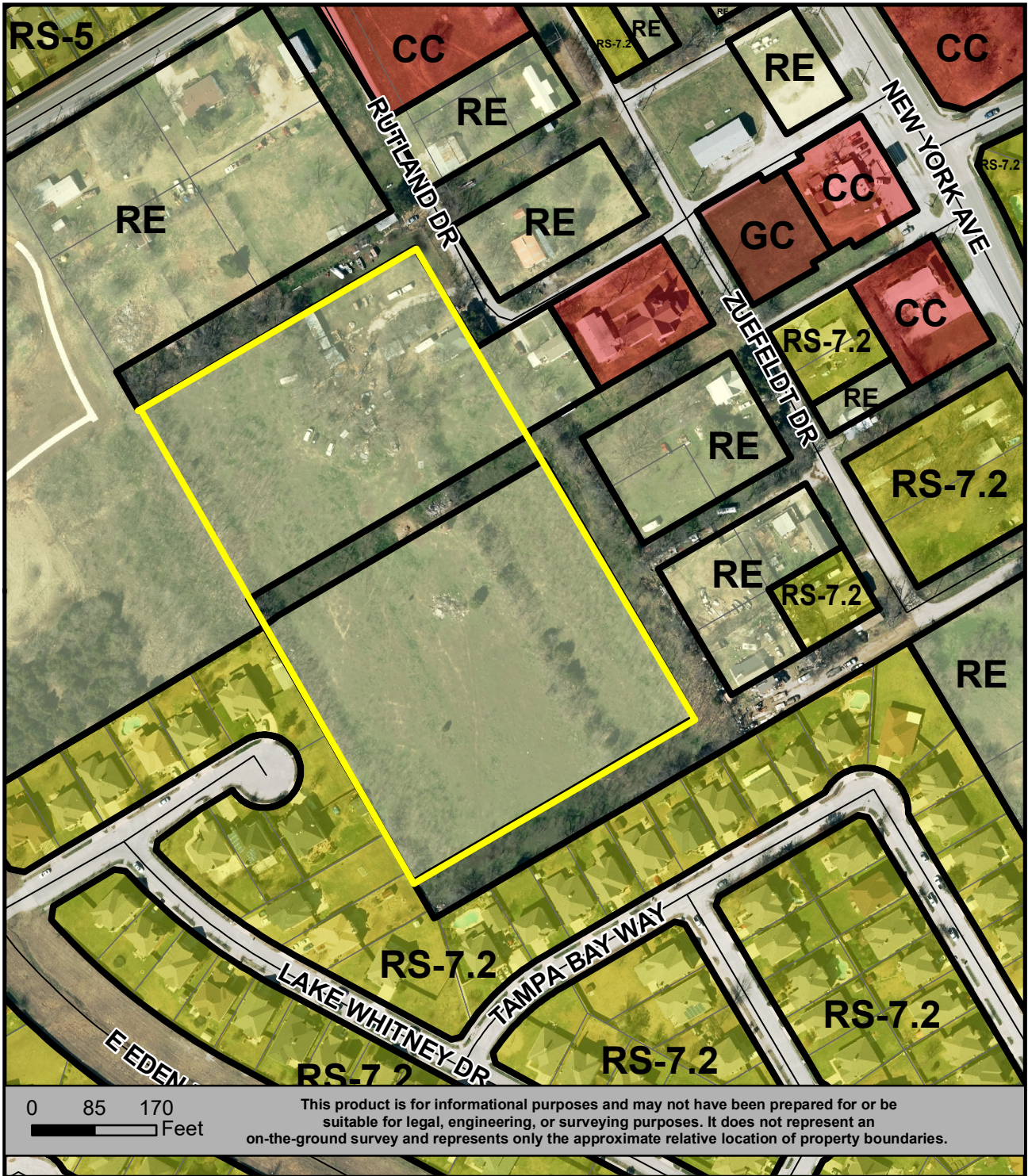
GENERAL LOCATION: 6920 Rutland Drive and 7116 Zuefeldt Drive; generally located west of New York Avenue and south of Mansfield Webb Road

REQUESTED ZONING: Application for approval of a Planned Development (PD) for Residential Single-family 5 (RS-5) uses, with a Development Plan, approximately 7.070 acres currently zoned Residential Estate (RE)

APPLICANT: Yogesh Patil

OWNER: Jerry A. Eubank

For additional information concerning this upcoming public hearing, call Kevin Charles in Planning and Development Services at 817-459-6515 (kevin.charles@arlingtontx.gov) and refer to PD21-36.



LOCATION MAP
PD21-36

PD FOR RS-5
WITH A DEVELOPMENT PLAN

