

PUBLIC HEARING

ZONING CASE: PD20-27

PUBLIC HEARING DATES: 02/02/22 (Planning and Zoning Commission)
03/08/22 (City Council)

GENERAL LOCATION: 6000 Copping Lane. The site is generally located east of South Cooper Street and south of West Sublett Road

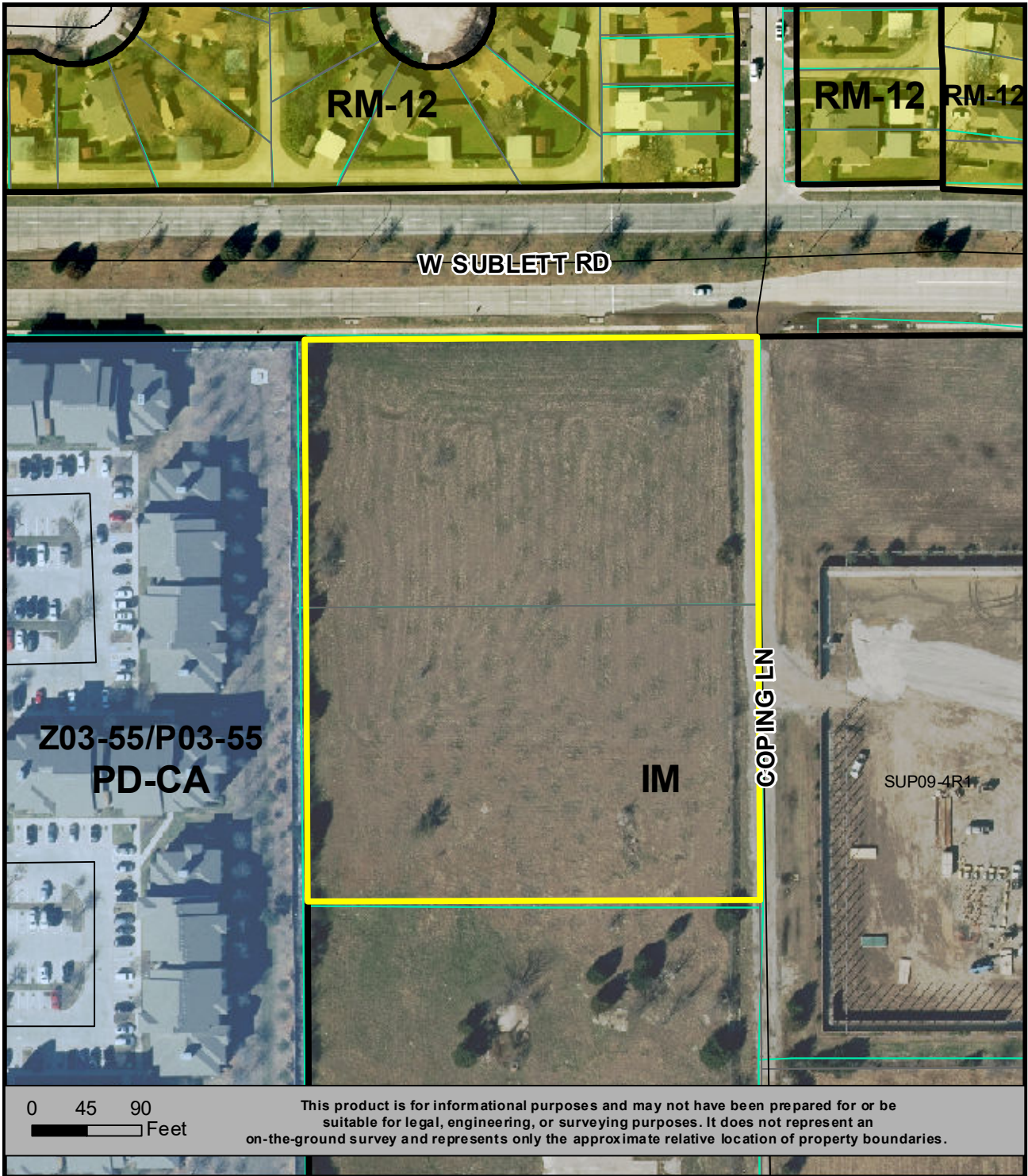
CURRENT ZONING: Industrial Manufacturing (IM)

REQUESTED ZONING: Application for approval of a Planned Development for Residential Multi-Family 22 (RMF22) uses with a Development Plan on approximately 4.049 acres.

APPLICANT: 1020 ventures, LLC, represented by Raja Raheel Khanzada

OWNER: BM Smart Investment, LLC

For additional information concerning this upcoming public hearing, call Kevin Charles in Planning and Development Services at 817-459-6515 and refer to PD20-27.



**LOCATION MAP
PD20-27**

 **Planned Development for
RMF-22, Residential Multi-Family-22 uses
with a Development Plan**



