

## **PUBLIC HEARING**

**ZONING CASE:** PD20-27

**PUBLIC HEARING DATES:** 06/16/21 (Planning and Zoning Commission)  
08/3/21 (City Council)

**GENERAL LOCATION:** 6000 Copping Lane. The site is generally located east of South Cooper Street and south of West Sublett Road

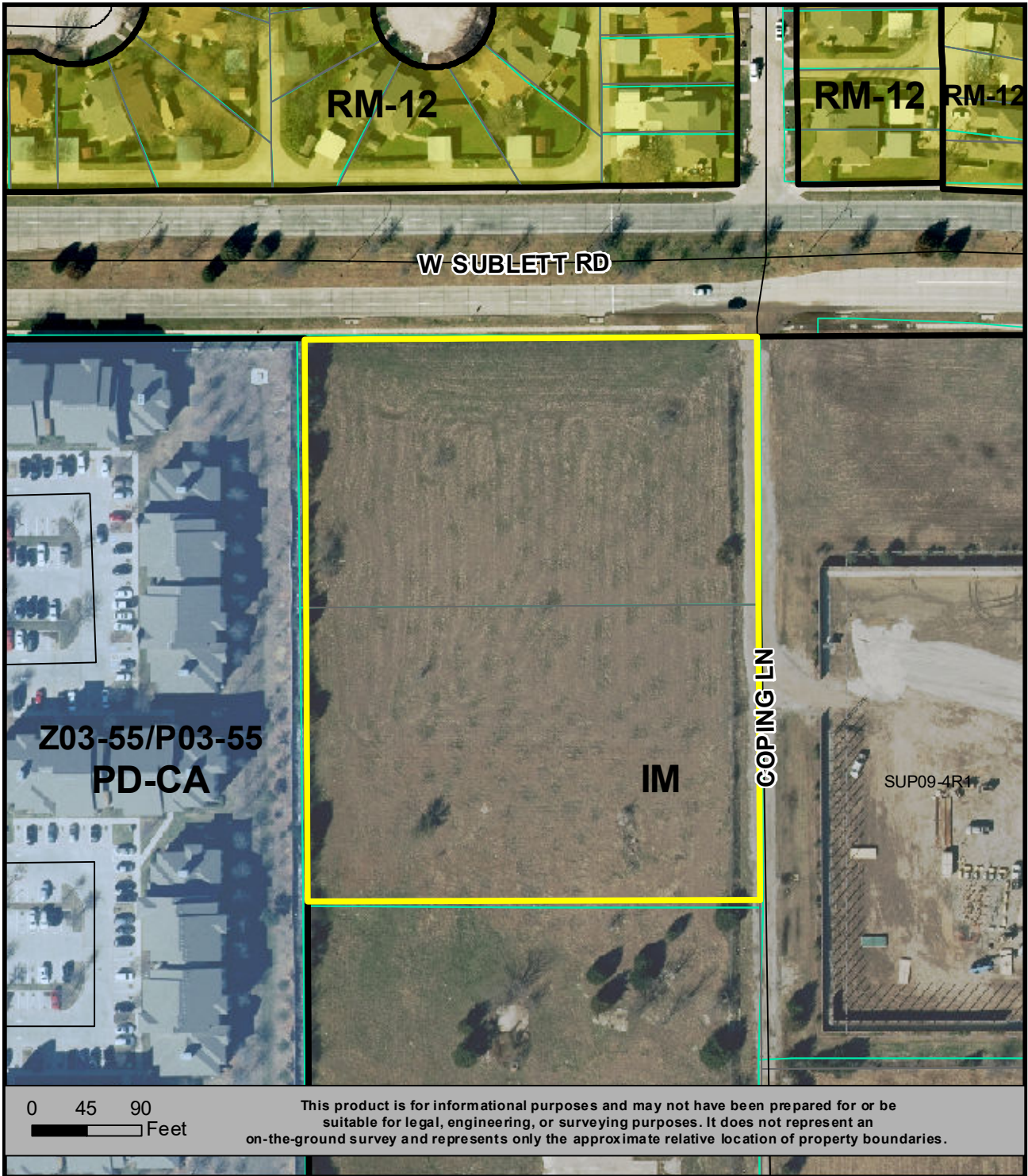
**CURRENT ZONING:** Industrial Manufacturing (IM)

**REQUESTED ZONING:** Application for approval of a Planned Development for Residential Multi-Family 22 (RMF22) uses with a Development Plan on approximately 4.049 acres.

**APPLICANT:** 1020 ventures, LLC, represented by Raja Raheel Khanzada

**OWNER:** BM Smart Investment, LLC

For additional information concerning this upcoming public hearing, call Kevin Charles in Planning and Development Services at 817-459-6515 and refer to PD20-27.



**LOCATION MAP  
PD20-27**

 **Planned Development for  
RMF-22, Residential Multi-Family-22 uses  
with a Development Plan**



