

PUBLIC HEARING

ZONING CASE: PD21-2

PUBLIC HEARING DATES: 05/05/21 (Planning and Zoning Commission)
06/08/21 (City Council)

GENERAL LOCATION: 300 East Bardin Road and 407 East Embercrest Drive; generally located south of East Bardin Road and west of the Arlington Municipal Airport.

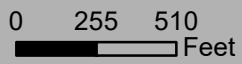
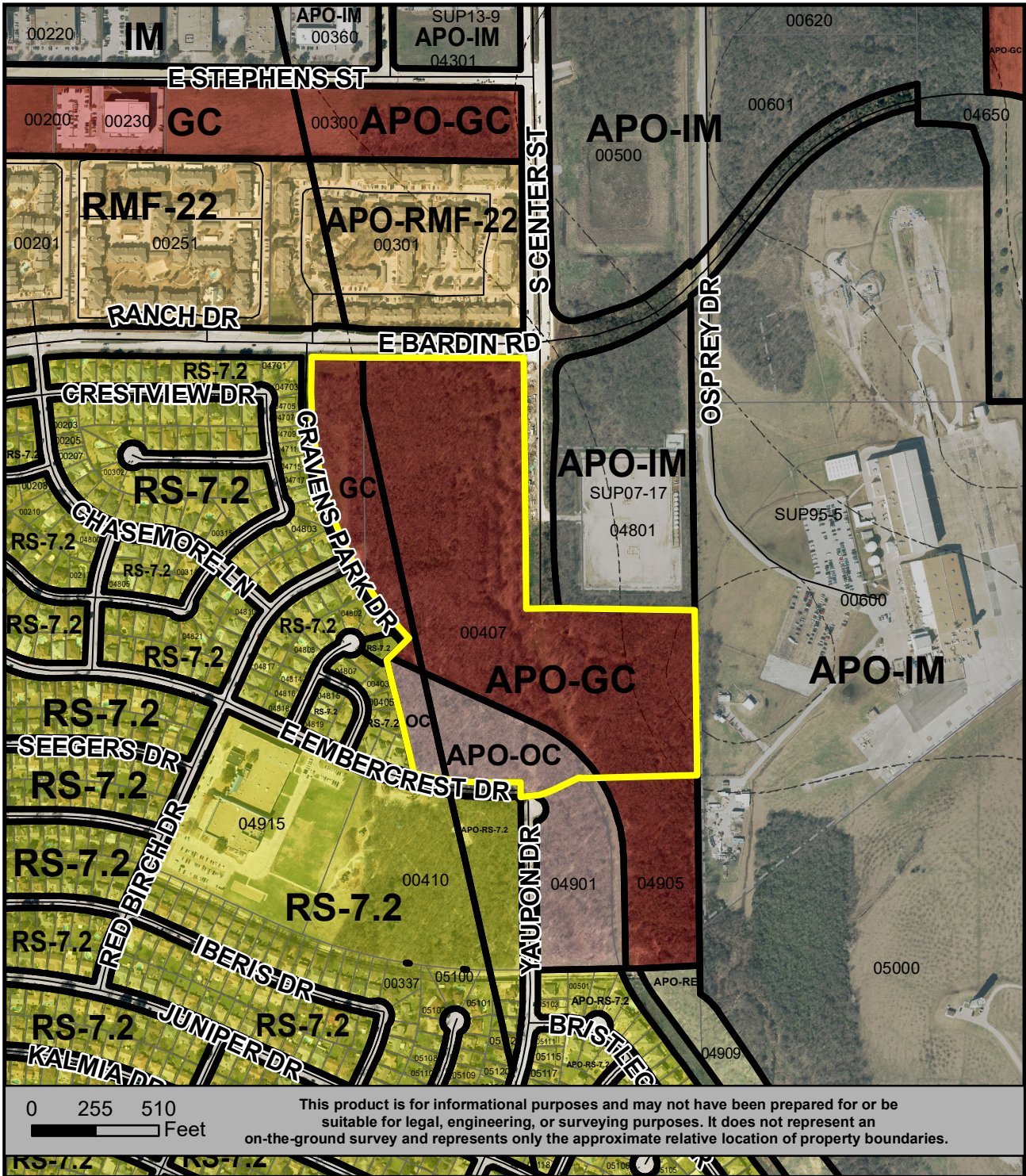
CURRENT ZONING: Airport Overlay-General Commercial (APO-GC), Airport Overlay-Office Commercial (APO-OC), General Commercial (GC), Office Commercial (OC)

REQUESTED ZONING: Application for approval of a Planned Development for Light Industrial (LI) uses with a Development Plan on approximately 35.331 acres

APPLICANT: MMA, Inc, represented by Douglas Cooper

OWNER: JSCP Partners, L.P.

For additional information concerning this upcoming public hearing, call Clifford Gholston in Planning and Development Services at 817-459-6670 and refer to PD21-2.



This product is for informational purposes and may not have been prepared for or be suitable for legal, engineering, or surveying purposes. It does not represent an on-the-ground survey and represents only the approximate relative location of property boundaries.

LOCATION MAP PD21-2

**PD FOR LI USES,
WITH A DEVELOPMENT PLAN**

