

## **PUBLIC HEARING**

**ZONING CASE:** PD20-33

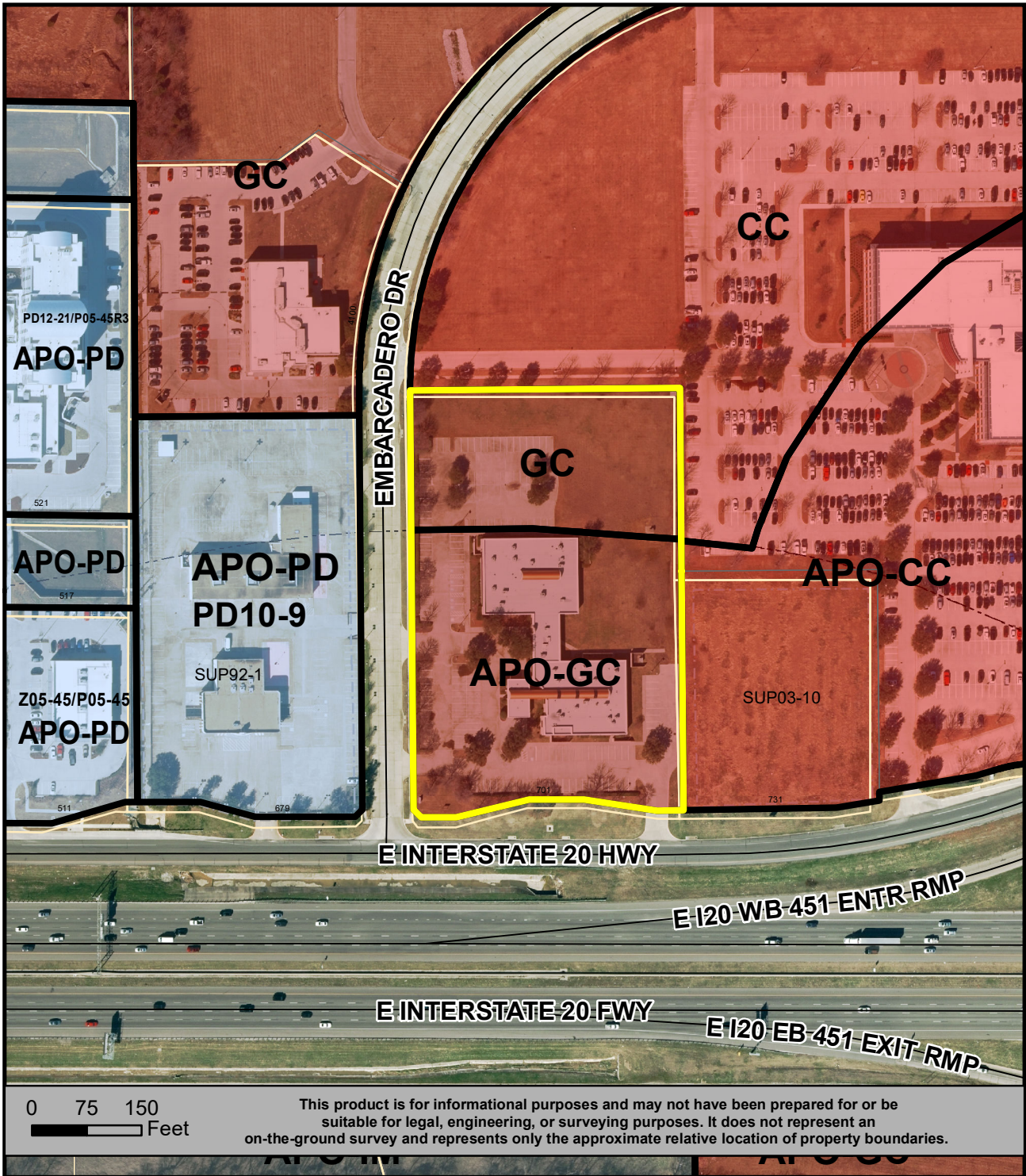
**PUBLIC HEARING DATES:** 03/3/21 (Planning and Zoning Commission)  
04/13/21 (City Council)

**GENERAL LOCATION:** 701 East Interstate 20 Highway; generally located north of East Interstate 29 Highway and south of Embarcadero Drive.

**REQUESTED ZONING:** Application for approval of a Planned Development (PD) for Airport Overlay-General Commercial (APO-GC) uses plus Motor vehicle sales, new and used, with a Development Plan on approximately 4.848 acres currently zoned for Airport Overlay General Commercial (APO-GC).

**APPLICANT/Owner:** Lakeland West Capital 32, LLC, represented by Jacob Sumpter from Mycoskie & Associates, Inc.

For additional information concerning this upcoming public hearing, call Amy Lopez in Planning and Development Services at 817-459-6655 and refer to PD20-33.



**LOCATION MAP  
PD20-33**

**PD FOR APO-GC USES PLUS  
NEW AND USED MOTOR  
VEHICLE SALES**

